

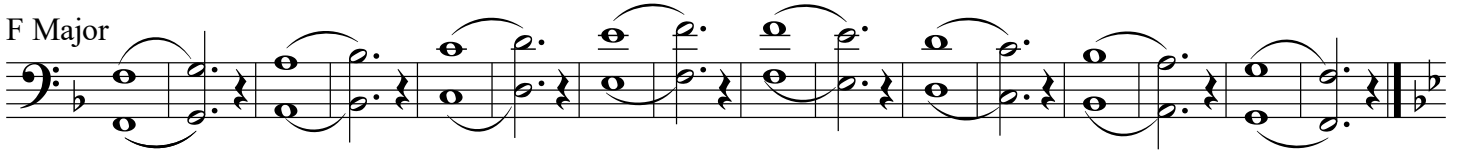
Score

Scales Trombone/Euphonium

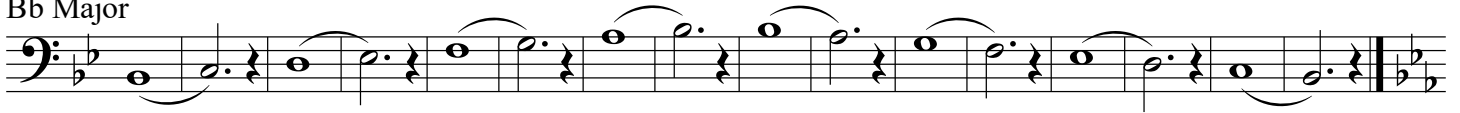
C Major



F Major



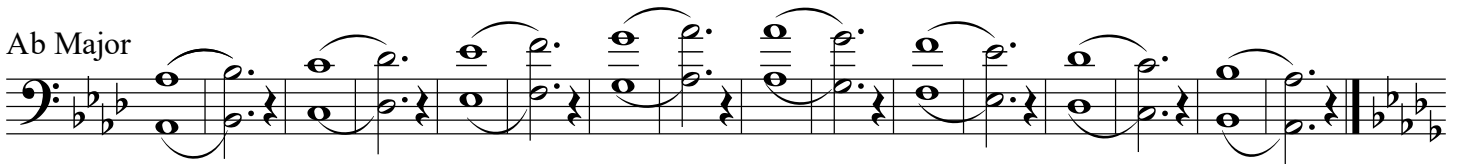
Bb Major



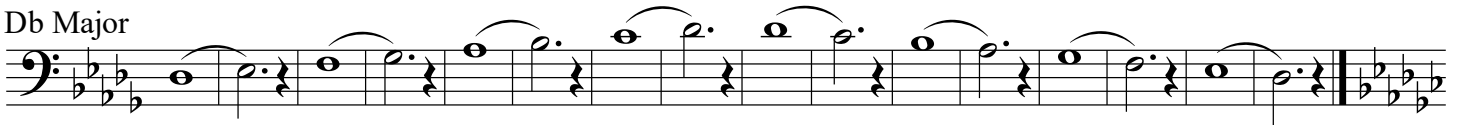
Eb Major



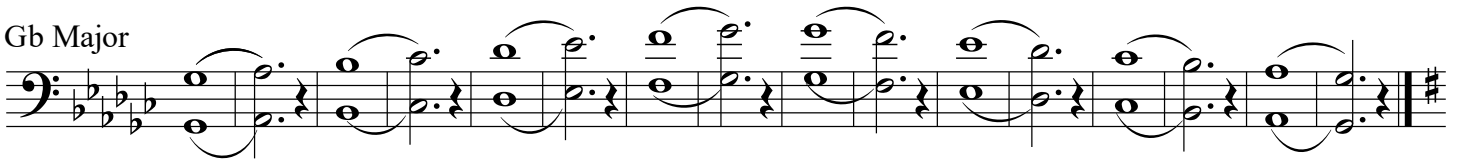
Ab Major



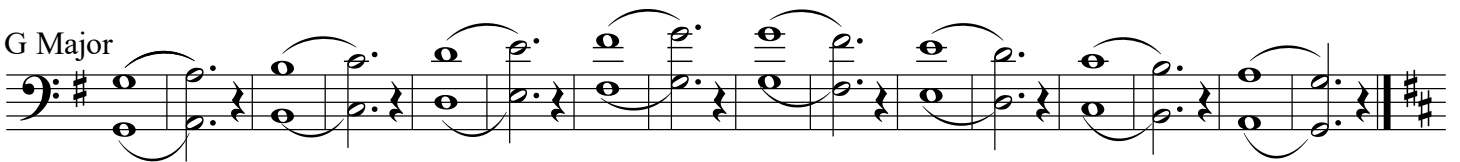
Db Major



Gb Major



G Major



D Major

Musical notation for D Major in bass clef. The key signature has two sharps (F# and C#). The melody consists of a sequence of eighth notes: D2, E2, F#2, G2, A2, B2, C#3, D3, E3, F#3, G3, A3, B3, C#4, D4. The notes are grouped in pairs with slurs and stems pointing up.

A Major

Musical notation for A Major in bass clef. The key signature has three sharps (F#, C#, G#). The melody consists of a sequence of eighth notes: A2, B2, C#3, D3, E3, F#3, G#3, A3, B3, C#4, D4, E4, F#4, G#4, A4. The notes are grouped in pairs with slurs and stems pointing up.

E Major

Musical notation for E Major in bass clef. The key signature has four sharps (F#, C#, G#, D#). The melody consists of a sequence of eighth notes: E2, F#2, G#2, A2, B2, C#3, D#3, E3, F#3, G#3, A3, B3, C#4, D#4, E4. The notes are grouped in pairs with slurs and stems pointing up.

B Major

Musical notation for B Major in bass clef. The key signature has five sharps (F#, C#, G#, D#, A#). The melody consists of a sequence of eighth notes: B2, C#3, D#3, E3, F#3, G#3, A#3, B3, C#4, D#4, E4, F#4, G#4, A#4, B4. The notes are grouped in pairs with slurs and stems pointing up.

F# Major

Musical notation for F# Major in bass clef. The key signature has six sharps (F#, C#, G#, D#, A#, E#). The melody consists of a sequence of eighth notes: F#2, G#2, A#2, B2, C#3, D#3, E#3, F#3, G#3, A#3, B3, C#4, D#4, E#4, F#4. The notes are grouped in pairs with slurs and stems pointing up.