

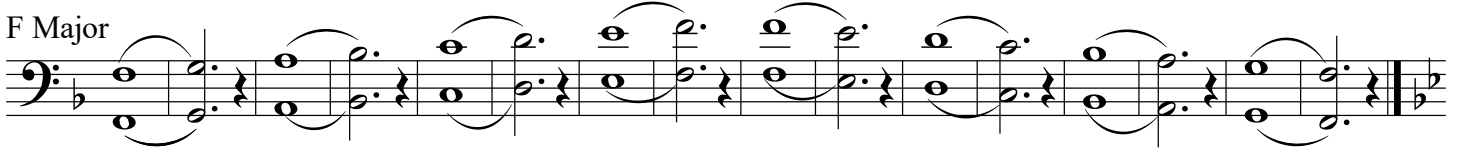
Score

Scales Tuba

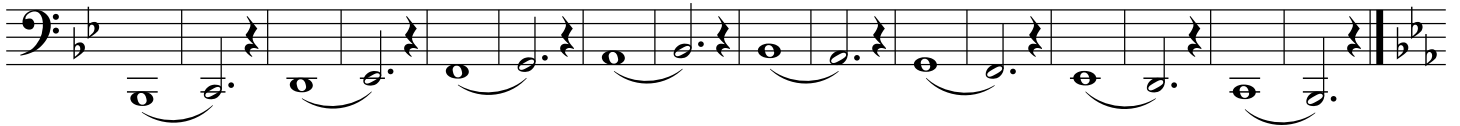
C Major



F Major



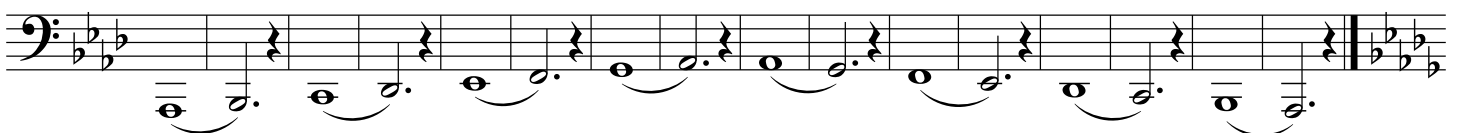
Bb Major



Eb Major



Ab Major



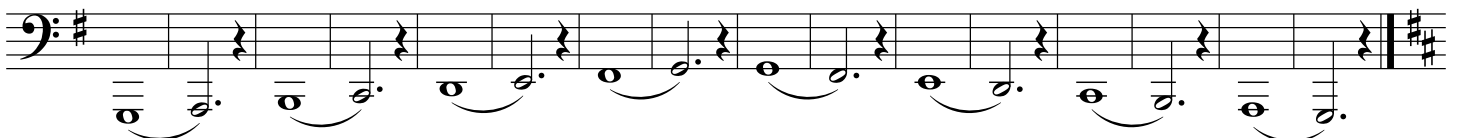
Db Major



Gb Major



G Major



D Major

Musical notation for D Major in bass clef. The key signature has two sharps (F# and C#). The melody consists of quarter notes and eighth notes, primarily moving in a descending sequence from D2 to A1, with some upward motion in the final measure.

A Major

Musical notation for A Major in bass clef. The key signature has three sharps (F#, C#, G#). The melody consists of quarter notes and eighth notes, primarily moving in a descending sequence from A2 to E1, with some upward motion in the final measure.

E Major

Musical notation for E Major in bass clef. The key signature has four sharps (F#, C#, G#, D#). The melody consists of quarter notes and eighth notes, primarily moving in a descending sequence from E2 to B1, with some upward motion in the final measure.

B Major

Musical notation for B Major in bass clef. The key signature has five sharps (F#, C#, G#, D#, A#). The melody consists of quarter notes and eighth notes, primarily moving in a descending sequence from B2 to F#1, with some upward motion in the final measure.

F# Major

Musical notation for F# Major in bass clef. The key signature has six sharps (F#, C#, G#, D#, A#, E#). The melody consists of quarter notes and eighth notes, primarily moving in a descending sequence from F#2 to C#1, with some upward motion in the final measure.